

Pizzeria

Depth 780 mm

Counter Pizza EN 2D -2°+8°C without top

Code: **TZS13/1M**

Model: **T422000002**

Exterior/interior finishing:

- Stainless steel AISI 304 18/10
- Back in Stainless steel AISI 304

Insulation:

- 60 mm thickness - CFC/HCFC free

Internal racks and slides:

- Stainless steel AISI 304 18/10

Inner corners:

- Rounded cornes ensuring maximum hygiene

Feet:

- Stainless steel AISI 304 adjustable 100-150 mm

Doors:

- Self-closing, reversibles with 105° dwell

Door handle:

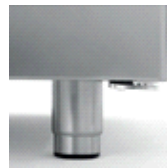
- Stainless steel AISI 304

Door gasket:

- Magnetic, easy to replace




Constructional data





• Dimensions	1450×780×810 mm
• Packing dimensions	1470×835×990 mm
• Net weight	90 kg
• Body height	710 mm
• Temperature range	-2°+8°C
• Cooling capacity	565 W*
• Standard connection	230 V - 50 Hz
• Total rate	546 W - 3,1 A
• Cooling gas	R404a
• Standard equipment	N. 8 pair of slides type L - 605 mm
• *Evap. -10°C cond. 54,4°C	

Features


 Plastific food container EN60×40 for pizza
Code O324364020


 Aluminium coated baking-pan 600×400 H. 20 mm
Code O282400600

 Pair of slides type C - 605 mm
Code O121160520

 Complete extraible frame fitted with telescopic slides for 600×400
Code L323030004

 Refrigerated drawer 1/2 for counter EN60×40
Code D623012120

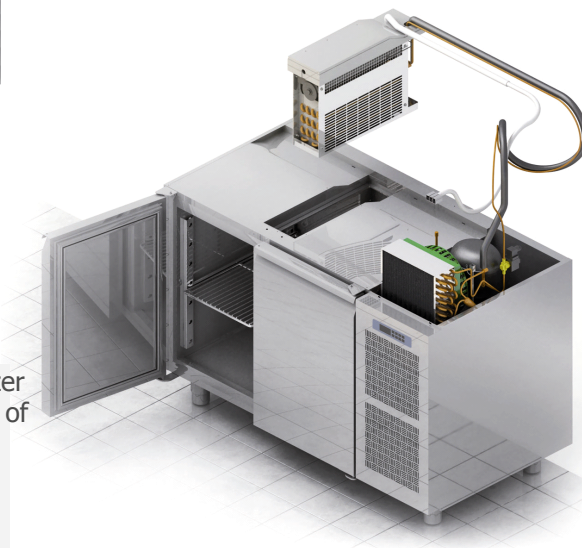
 Refrigerated drawer 1/3 for counter EN60×40
Code D623013120

 Refrigerated drawer 1/3+2/3 for counter
EN60×40
Code D623023120

Accessories



Coldline made major investments in design research, becoming a leader in technology and innovation. Each cabinet marked with the FSSsymbol is equipped with a refrigeration system independent of the structure, which provides improved flexibility and service.



FSS • FAST SERVICE SYSTEM

- You can change the intended use of an appliance, a freezer into a chiller - and the other way around - even after years of installation.
- You can extend the life of a refrigeration cabinet by replacing its old refrigeration system with a new one.
- Maintenance and service are simple, quick and do not require specialised personnel.

FSS • Fast Service System

NO-COMPROMISE QUALITY STEEL

AISI 304
AISI 304 18/10 is a high quality steel. Its stability guarantees good-looking and durable products, ensuring maximum hygiene and corrosion resistance over time.

INSULATION THICKNESS

60 mm
The 60 mm thick insulation ensures lower heat loss, reduced work of the compressor, therefore lower energy consumption.

HOT GAS DEFROST

GAS
Intelligent defrost changes according to the actual presence of frost. The system runs for the minimum time required.

EVAPORATION SYSTEM

The automatic evaporation of condensing water is activated only in the presence of water produced as a result of a defrost cycle.

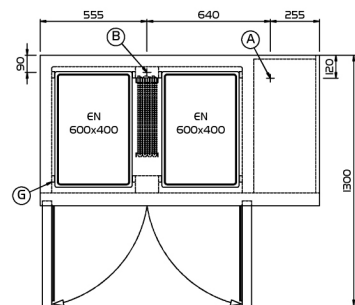
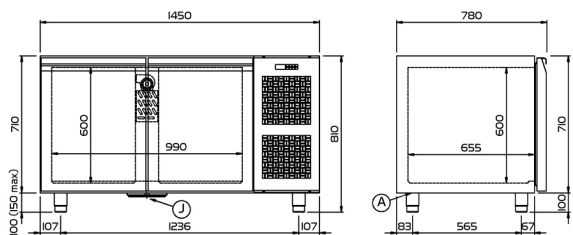
CONSTANT TEMPERATURE

The fans stop when the door is opened to reduce temperature changes and consequently reduce the work of the compressor.

ASPERA COMPRESSORS

Aspera compressors reduce energy consumption by 15% and acoustic impact by 5 dBA.

Focus



(A) POWER SUPPLY CABLE OUTLET (B) CONDENSATION WATER DRAIN (D) AIR FLOW CONVEYOR

(G) RACKS PITCH (J) WASTE HEAT RECOVERY VAPORIZER

Technical drawing